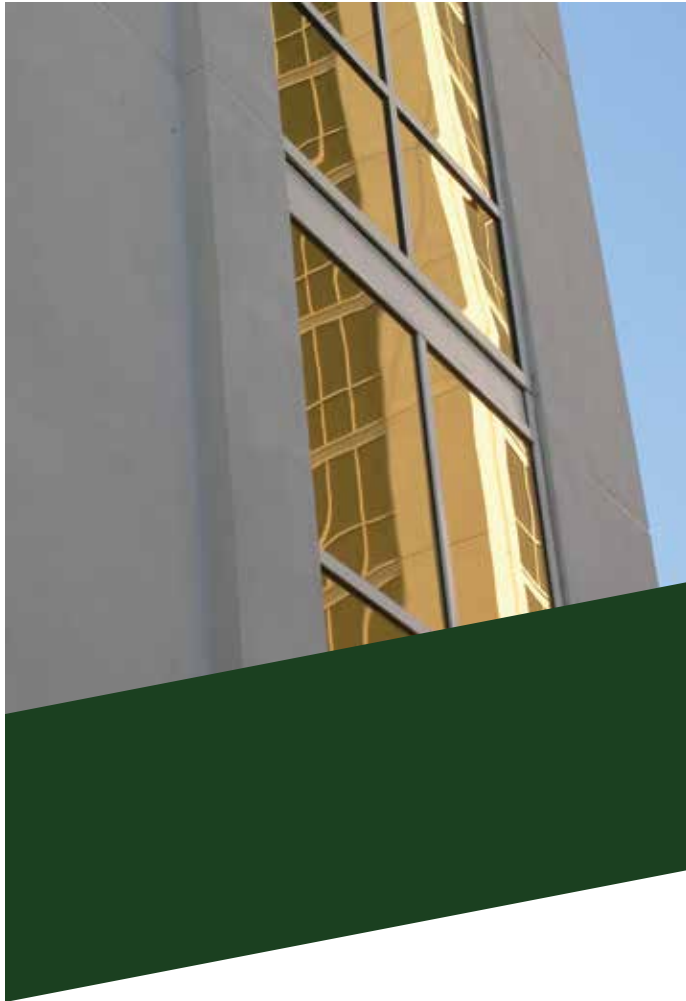


MAPESTOP™

MGM Residences in Las Vegas, Nevada



FIRE RESISTANT PANELS

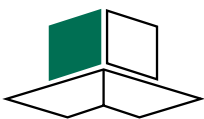
MapeStop fire resistant panels are the ideal solution for glazing applications that require a fire rated system. Available in all architectural finishes, MapeStop panels can be designed with an R-Value up to 27.0. Optional cores, substrates and thicknesses are available to meet any local design codes including Class A and ICBO. Panels are an ideal alternative to side lites and door transoms to provide additional fire protection.

APPLICATIONS

- Schools / Hospitals
- Curtain Wall / Spandrel
- Doors / Transoms
- Window Replacement

FEATURES

- High Insulation Value
- Available In All Architectural Finishes
- Thicknesses up to 4"
- Class A Fire Rated
- 15-20 Minute Fire Rated
- ASTM E-84



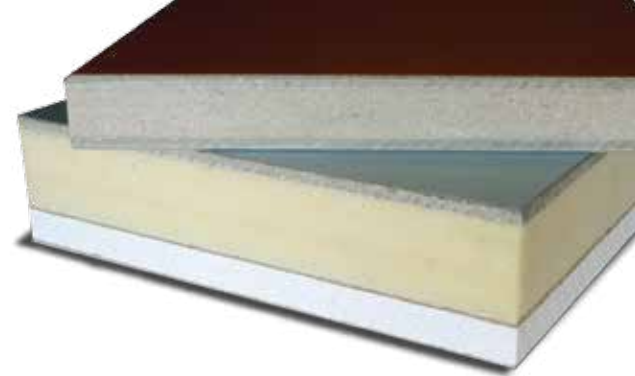
mapes
ARCHITECTURAL PANELS

Mapes Panels, LLC
2929 Cornhusker Hwy / Lincoln, NE 68504
800-228-2391 / 800-737-6756 fax
panels@mapes.com / www.mapespanels.com

For more details, please visit mapespanels.com

MAPESTOP™

TECHNICAL DATA



MAPESTOP 15/20 MINUTE RATING

- Available in all finishes.
- Polystyrene or Isocyanurate core.
- Higher R-values.

R-VALUES

	Polystyrene	Isocyanurate
1"	3.5	4.5
1 1/2"	6.0	8.0
2"	8.5	11.5
2 1/2"	11.0	15.0
3"	13.5	18.5
4"	18.0	25.5

MAPESTOP CLASS A RATING

- Highly impact resistant.
- R-values up to 8.6.
- Class A rated core - Micore®.

R-VALUES

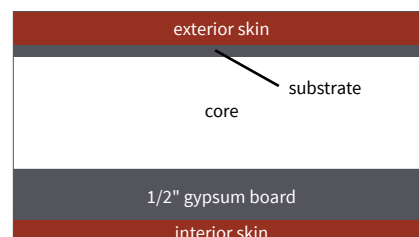
1"	2.5
1 3/4"	4.0
2 1/2"	5.5
3 3/4"	8.1
4"	8.6

SURFACE OPTIONS

	Embossed	Smooth	Custom Color	Aluminum	Steel	Warranty (yrs)
Porcelain on Steel		X	X*		X	20
Kynar	X	X	X*	X	X	5 to 20
Polyester Baked Enamel	X	X	X*	X		5
Anodized	X*	X	X*	X		n/a
Primed Aluminum	X	X		X		n/a
Mill Finish	X	X		X		n/a

* Indicates premium charge; consult factory

TYPICAL CROSS SECTION

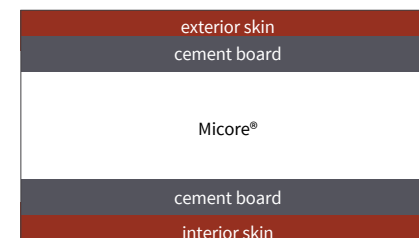


TEST DATA

	Polystyrene	Isocyanurate
Flame Spread	5	5
Fuel Contributed	5	15
Smoke Developed	20	0

(Based on 2 1/2" Panel)

TYPICAL CROSS SECTION



TEST DATA

	Cement Board	Micore
Flame Spread	0	25
Fuel Contributed	0	25
Smoke Developed	0	25

(Based on 2 1/2" Panel)