



FORMED. FLUSH. MODERN.

MapeShape panels have a formed exterior face and offset edges for glazing into standard channels. Highly customizable and available up to 6" thick. The panels are designed to create a flush appearance with the wall surface and framing. Butt joint panels are also available to eliminate exterior mullions.

For more details, please visit mapes.com



MAPESHAPE™

TECHNICAL DATA



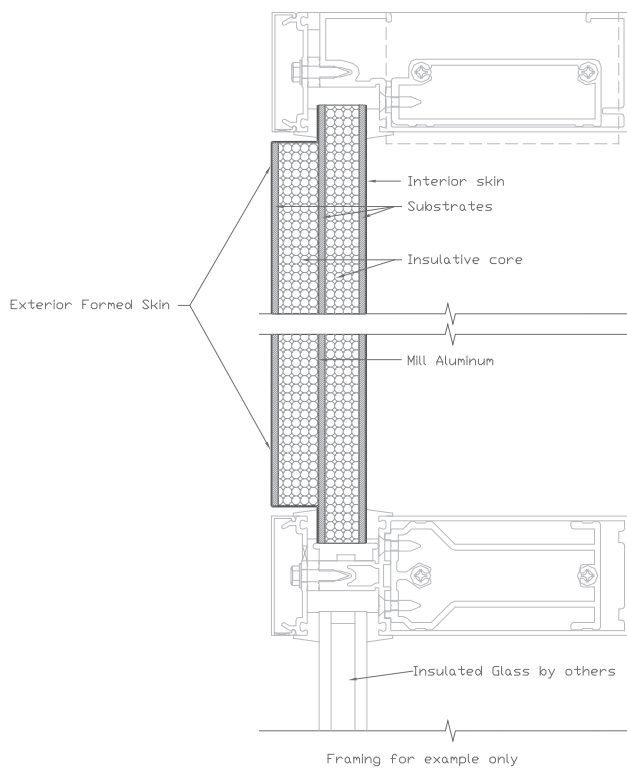
FEATURES

- Fits any standard glazing pocket
- Reduces framing mullions
- Minimizes shadow lines
- Offers flush surface (exterior and/or interior)
- Available up to 6" thick
- Can be made to extend beyond face of frame
- Structural glazing options available

APPLICATIONS

- Curtain Walls/Windows
- Thermal Retrofit
- Traditional or Structural Glazing

MAPESHAPE GLAZING DETAIL



NOTE: Anodized aluminum subject to crazing along formed edges.